

## Tribrachs



### Tribrach with DIN stub axis, Ø 34 mm (ZEISS-centring)

Connecting thread	: 5/8"
Circular level	: 8 1/2 mm
Adjustable area of the 3 base screws	: 10 mm
available colour	: black

<b>Tribrach, DIN stub axis</b>	<b>Order-No. 3377</b>	<b>175,- €</b>
--------------------------------	-----------------------	----------------

### Tribrach with clutching system (WILD centring)

Technical information see above

#### Without optical plummet:

<b>Tribrach, clutching system (without picture)</b>	<b>Order-No. 3366</b>	<b>175,- €</b>
---	-----------------------	----------------

#### With optical plummet:

Magnification	: 2 x
image position	: vertical
Focussing area	: 0,35 up to ∞
Accuracy of the set-up	: ± 0,5 mm/1,5 m

<b>Tribrach, clutching system, optical plummet</b>	<b>Order-No. 3365</b>	<b>265,- €</b>
--	-----------------------	----------------



## Optical Plummetts

When using tribrachs without integrated optical plummetts, a centring of the tribrach on the measuring point can be done by optical plummetts that are placed in the specific centring system.

All optical plummetts shown here are rotatable around their axis (but can be fixed with a clamp screw in the required position). For levelling, one spirit level is enough. It is adjustable and has a grinding accuracy of 45 "/2 mm.

Optical data: see tribrachs with integrated optical plummet.  
colours: black, green, grey, yellow (please specify when ordering)

#### The optical plummetts are available for both centring systems

- DIN stub axis (ZEISS centring)
- clutching system (WILD centring)

and with 2 different connecting possibilities for prism holders or targets:

1. with LEICA prism connection (vertical bolt Ø 12 mm), height adjusted to Leica (WILD) total station/EDM with tilting axis height 196 mm:

<b>Optical plummet, DIN stub axis, Leica (without picture)</b>	<b>Order-No. 3481.1</b>	<b>295,- €</b>
--	-------------------------	----------------

<b>Optical plummet, Clutching system, Leica</b>	<b>Order-No. 3481.2</b>	<b>295,- €</b>
---	-------------------------	----------------

2. with 5/8" thread bolts, effective height 70 mm:

<b>Optical plummet, DIN stub axis, 5/8"</b>	<b>Order-No. 3484.1</b>	<b>295,- €</b>
---	-------------------------	----------------

<b>Optical plummet, Clutching system, 5/8"</b>	<b>Order-No. 3484.2</b>	<b>295,- €</b>
--	-------------------------	----------------

#### ad 2.: Extension OL:

If the prism center has to have the same height as the tilting axis of the total station/EDM, it will require an extension:

For prisms with 5/8" thread:

<b>Extension OL, 5/8"-5/8"</b>	<b>Order-No. 300.OL</b>	<b>24,50 €</b>
--------------------------------	-------------------------	----------------

For prisms with Leica vertical bolt connection Ø 12 mm:

<b>Extension OL, 5/8" Leica</b>	<b>Order-No. 367.OL</b>	<b>30,- €</b>
---------------------------------	-------------------------	---------------

Please always state your prism and total station/EDM type when ordering!





## Tribrach Inserts

After levelling the tribrach with the total station/EDM or with an optical plummet, inexpensive inserts may be used in the forced centring. They are also available for both tribrach systems and with 2 different connection possibilities for prisms and targets:

1. with Leica prism connection (vertical bolt  $\varnothing$  12 mm), height adjusted according to Leica (WILD)- total station/EDM with tilting axis height 196 mm, compatible with Leica type GRT 44:

Tribrach insert, Clutching system, Leica $\varnothing$ 12 mm	Order-No. 3463	65,- €
--	----------------	--------

2. with 5/8" thread bolt:

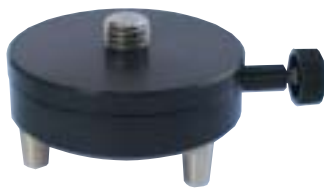


DIN stub axis, 5/8" thread	Order-No. 340	19,- €
----------------------------	---------------	--------

Tribrach insert, clutching system, 5/8" thread, not rotatable (without pict.)	Order-No. 3452	43,- €
---	----------------	--------

Tribrach insert, clutching system, 5/8" thread, rotatable with friction (without pict.)	Order-No. 3456	82,- €
---	----------------	--------

Tribrach insert, clutching system, 5/8" thread, rotatable, clamp screw	Order-No. 3455	87,- €
--	----------------	--------



### ad 2.: Extension DE

Also for the tribrach inserts with 5/8" thread, the height of the prisms and targets can be adjusted with extensions on the tilting axis height of your total station/EDM:

For prisms with 5/8" thread:

Extension DE, 5/8"-5/8"	Order-No. 300.DE	24,50 €
-------------------------	------------------	---------

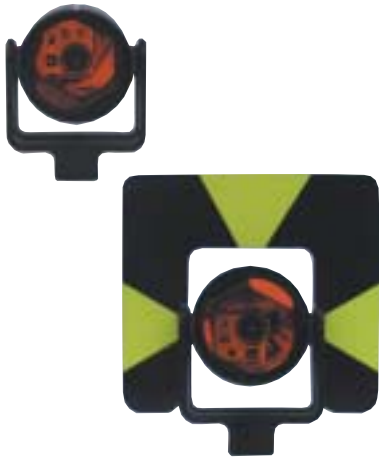
For prisms with Leica vertical bolt connection  $\varnothing$  12 mm:

Extension DE, 5/8"-Leica	Order-No. 367.DE	30,- €
--------------------------	------------------	--------

Please always specify your prism and total station/EDM type when ordering!



## Prisms and holders



### Tiltable reflector type Leica GPH 1

Same construction as Leica – reflector GPH 1 + GPR 1, fully compatible, reflective copper coated glass prism, Prism constant  $K = -34$  mm (Leica = 0 mm)  
Push button – quick connection.

**Prism type Leica GPH 1+GPR 1 with target+carrying pouch** Order-No. 3437 215,- €



### Tiltable reflector holder for Zeiss ETR 1N

Special fabrication made of anodised aluminium.

- 50 mm tilting axis height
- with wall adapter WA 50, see catalogue page 24
- 5/8" female thread
- M8 screw to screw in the prism ETR 1 without tools
- adjustable tilting resistance
- firm prism constant  $K = -35$  mm

**Reflector holder EZRT 50 (without prism)** Order-No. 155 41,50 €



For use on a pendulum holder, with counter weight and integrated circular level, tilting axis height 56 mm, same construction as EZRT 50.

**Reflector holder EZP 5/8" (without prism)** Order-No. 150.2 49,- €



### Prism P60, Ø 60 mm

compatible with standard prisms from Sokkia, Topcon, Nikon, Pentax etc.  
Colour yellow, non-reflective

**Prism P 60** Order-No. 1861 105,- €

### Prism holder PRT 60

for prism P 60,  
with prism constants  $K = 0, -30, -34, -35, -40$  mm,  
option: circular level JDL (see page 10).

**Prism holder PRT 60 (without prism)** Order-No. 1802.\_\_\_\_ 41,50 €

- as long as stocks last -

